

Part : S8U

Specifications



122 lm/W
Max. Energy efficiency

1510 lm/m
12W/m
Max.Length: **5m**
only one side powered

ENERGY
SUPPLIER'S NAME
MODEL IDENTIFIER
A
B
C
D
E
F
G
WXYZ
kWh/1000h
51026102

60LEDs/m DC12V 8mm(FPC) SMD2835
LED Light Strips

60LEDs/m DC12V 8mm(FPC) SMD2835 LED Light Strips

DL-F28A30V12-S8U-*

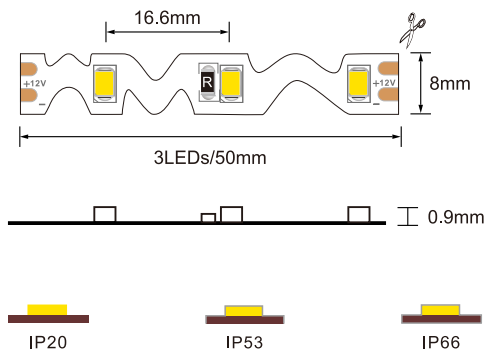


Deno Lighting focuses on high efficiency LED strips and therefore complies with the European ErP EcoDesign regulation. With the high efficiency LED strips series the demands of the legislator are met, ensuring environmentally friendly LED lighting strips.

Main features:

- A. Up to 122 lm/W for a high degree of efficiency.
- B. 3 led/per cutting unit;
- C. 60 led/m to ensure continuous light without dots;
- D. 5m length no brightness dropped to keep high light efficiency at the same time.

Dimensions



- Max. Length:** 5m(16.4')/roll
- Cutting unit:** 3LEDs/50mm(1.968")
- LED height:** 0.9mm(0.035")
- LED spacing:** 16.6mm(0.653")
- Mounting:** 3M tape
- IP Rate:** IP20/IP53/IP66
- Min. bend diameter:** Φ60mm(2.362")
- Copper foil:** 2oz

Product Parameters

LEDs Q'ty/m	60	Max. Power:	12W/m	Beam Angle:	120°
		Actual Power :	11.6~12.0W/m	On-off times:	10000 (test times)
SMD Type	2835	Input Current:	1.03A/1m & 4.37A/5m	Operating temperature:	Ta: -25~40°C, Tc:75°C(max)
		Input Voltage:	DC12V	Operating humidity:	40%-70%RH
		SDCM:	≤3 Step (1Bin)	Lifetime:	50000h
		CRI:	Ra>80/90/95	Standard Package:	5m/roll

60LEDs/m DC12V 8mm(FPC) SMD2835 LED Light Strips

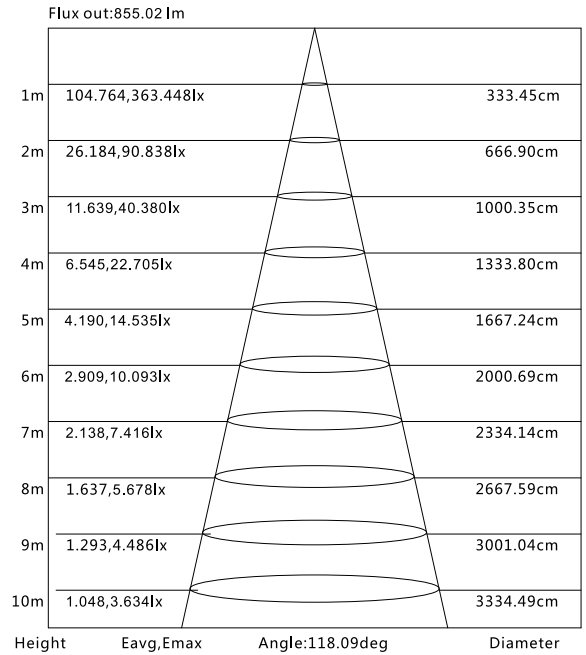
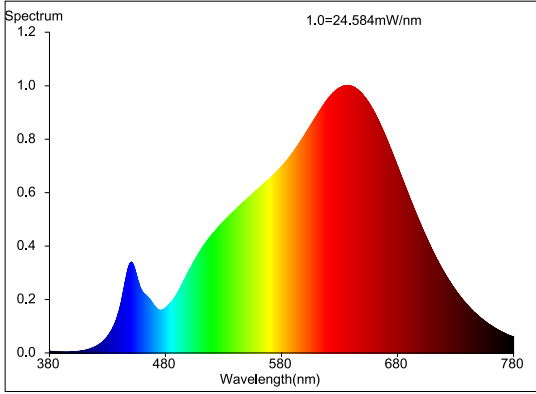
Electronic & Output Data 122lm/W

Warranty: 5 years

Self-encapsulated design offers light optional 1900-6000K white

Lights light efficiency up to 122lm/W

The max. length: 5m (Only one side powered)



Note: The Curves indicate the illuminated area and the average illumination when the luminaire is at different distance.

Power	CRI	Colour	CCT	Lumen(lm)	lm/W	Energy Efficiency Class	
12W/m	Ra>80	SWW	1900K	1140	93	F	
		SWW	2300K	1215	99	F	
		WW	2700K	1325	108	F	
			3000K	1405	114	E	
			3500K	1435	116	E	
		NW	4000K	1510	122	E	
			5000K	1495	121	E	
		PW	6500K	1480	120	E	
		Ra>90	SWW	1900K	1040	84	G
			SWW	2300K	1140	92	F
	WW		2700K	1220	99	F	
			3000K	1310	106	F	
			3500K	1320	107	F	
	NW		4000K	1465	118	E	
			5000K	1425	116	E	
	PW		6500K	1400	113	E	
	Ra>95	WW	2700K	1105	90	F	
			3000K	1180	96	F	
			3500K	1300	105	F	
		NW	4000K	1315	107	F	

1. The tolerance of output data is ±10%.
2. The output data tested according to IES .
3. The above data is based on IP20 ,one meter,only for reference
4. The standard power is 12W/m, and the actual power range is 11.6~12.0W/m.
5. If there is any customized power, please contact sales at any time.

60LEDs/m DC12V 8mm(FPC) SMD2835 LED Light Strips

Product Coding Method

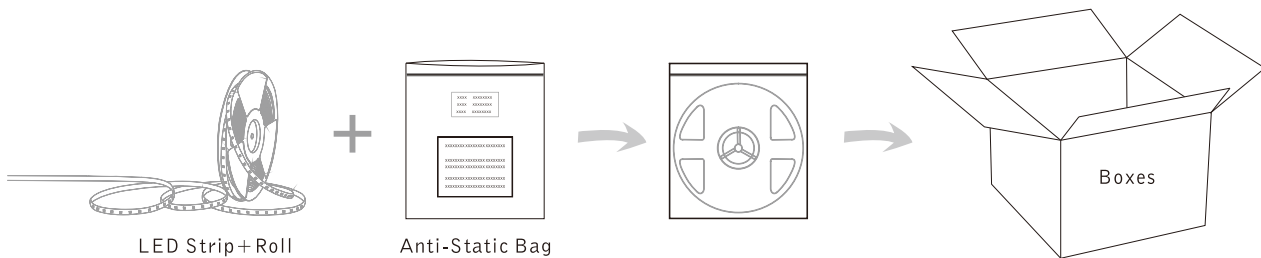
DL - F 28 A 30 V12 - S8U - Z

① ② ③ ④ ⑤ ⑥ ⑦ ⑧

① Model: **DENO Lighting**

② Category	③ LED Type	④ IP Rate	⑤ LEDs/0.5m	⑥ Input Voltage	⑦ Color of LEDs	⑧ Special Order NO
F Flex LED Strips	28 2835SMD	A IP20	30 60LED/m	V12 DC12V	S8U Product number	8 PCB Width
		B IP53				AB Angle bendable
		E IP66				CV Constant Voltage
					
					

Packaging Information



Note

How to recognise an environmentally friendly LED strip for European legislation?

The new series of environmentally friendly LED strips proposed by Deno Lighting meet the characteristics required by the regulations and will have a specific energy label. The current classification ranges from A++ (most efficient value) to E (least efficient value) while the classification with new parameters will range from A (most efficient value) to G (least efficient value); the new labels will therefore provide information on energy consumption, expressed in kWh per 1,000 hours, and will have a QR code to display more information. The EcoDesign guidelines will make it easier for you to implement this regulation within your own reality and to help you understand the scope of this change.